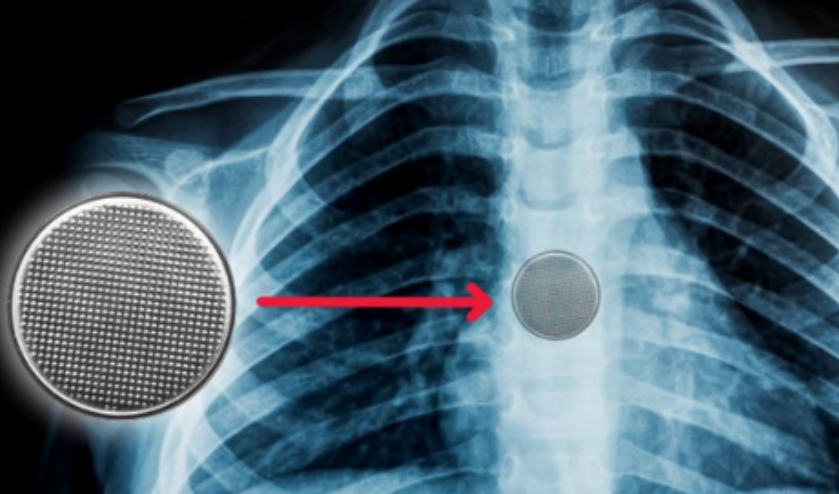


BUTTON BATTERIES CAN KILL

Keep all batteries out of children's reach



 Warning: If swallowed or inserted, button batteries can cause serious injury or death in as little as 2 hours.

Did you know?

3 CHILDREN

in Australia have died after swallowing a button battery.

20 CHILDREN

a week present to emergency departments with a button battery related injury.

1 CHILD

every 3 weeks suffers a permanent button battery related injury, requiring life long medical treatment.

ALL CHILDREN

under age 5 are most at risk of a button battery ingestion or insertion.



What are the Symptoms?

Symptoms caused by swallowing or inserting a button battery can mimic many common illnesses. In some cases there may be no symptoms present. However, please look out for:

- Coughing, gagging, sore gums or sore throat
- Chest pain, grunting or laboured breathing
- Drooling, nausea and/or vomiting
- Bleeding, discharge or vomiting of blood
- Food and drink refusal
- Dark green or black stool
- Fever and/or high blood pressure
- Lethargy

How to be Button Battery safe



Look for items in the home containing button batteries and dispose of any unwanted items safely.



Ensure items have secured button battery compartments. Remember to tighten the screw in the battery compartment after replacing the battery.



Store unused button batteries in a sealed container, up high and out of reach of children.



Place tape around both sides of the button battery and dispose of the battery safely and immediately. Visit <https://bcycle.com.au/drop-off/> to find a battery recycling drop off near you.

How to call for help

If you suspect a button battery has been swallowed or inserted, immediately call the **Poison Information Center 13 11 26** for 24/7 expert advice.

If your child is having difficulty breathing, immediately **CALL 000** for an ambulance.

DO NOT let the child eat or drink. **DO NOT** induce vomiting.

YOU CAN SAVE A LIFE.
VISIT [BELLASFOOTPRINTS.COM.AU](https://bellasfootprints.com.au)

 Bella's Footprints
Button Battery Awareness

